

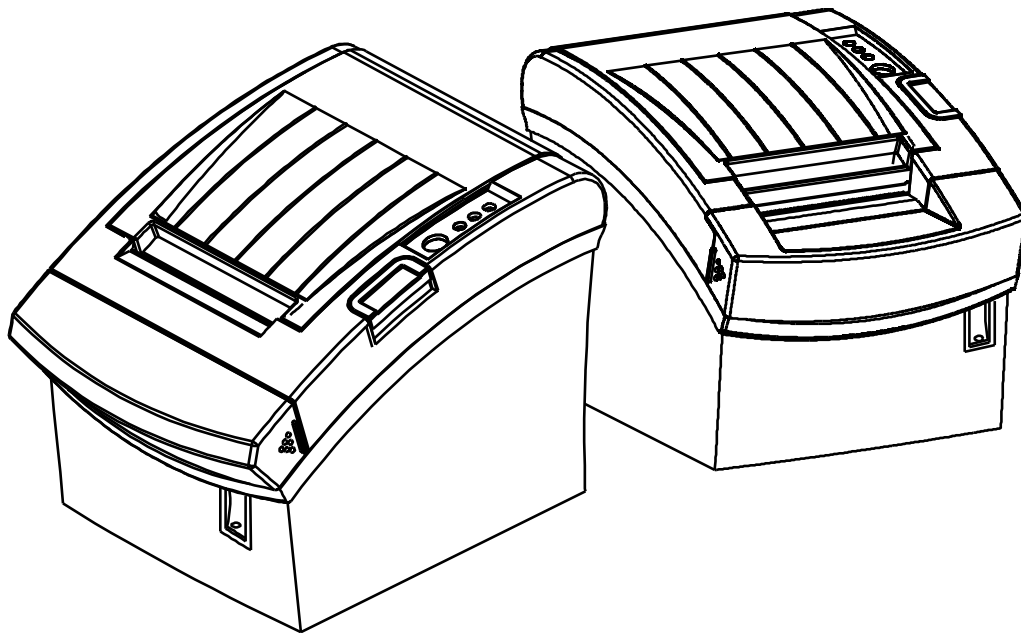


# Software Manual NV Image Tool

---

Rev. 1.00

GTP-250II



<http://www.senortech.com>

**■ Table of Contents**

**1. Manual Information.....3**

**2. Usage Environment .....3**

    2-1 Operating System .....3

    2-2 Device Property .....3

**3. Ready to NV Image Tool .....3**

**4. Usage of NV Image Tool .....4**

    4-1 Communication Configuration .....4

    4-2 Image List Management .....5

    4-3 Change Color.....6

    4-4 Download the Image.....6

        4-4-1 Download the color image in thermal printer .....7

        4-4-2 Download the mono image in thermal printer .....8

    4-5 Print the NV Image .....9

## **1. Manual Information**

The purpose of this manual is to provide information on the operation and usage instructions of the NV Image Tool for the SENOR Tech GTP-250II Printers.

This program helps you to download user-defined images to the flash memory in the printer and to recall and print those images with fast speed.

## **2. Usage Environment**

### **2-1 Operating System**

Following operating systems are supported for usage.

Microsoft Windows XP  
Microsoft Windows 2003 Server  
Microsoft Windows Embedded For Point Of Service  
Microsoft Windows Vista  
Microsoft Windows 7

### **2-2 Device Property**

Use of this Utility is supported on the following property.

Model	Serial	Parallel	USB	Ethernet	Capability	Downloadable Image Count	Color Support
GTP-250II	O	O	O	O	256Kb	10	Mono / 2Color

O: Supported

## **3. Ready to NV Image Tool**

NV Image Tool is included in the enclosed CD, and can also be downloaded from the SENOR Tech website.

[www.senortech.com](http://www.senortech.com)

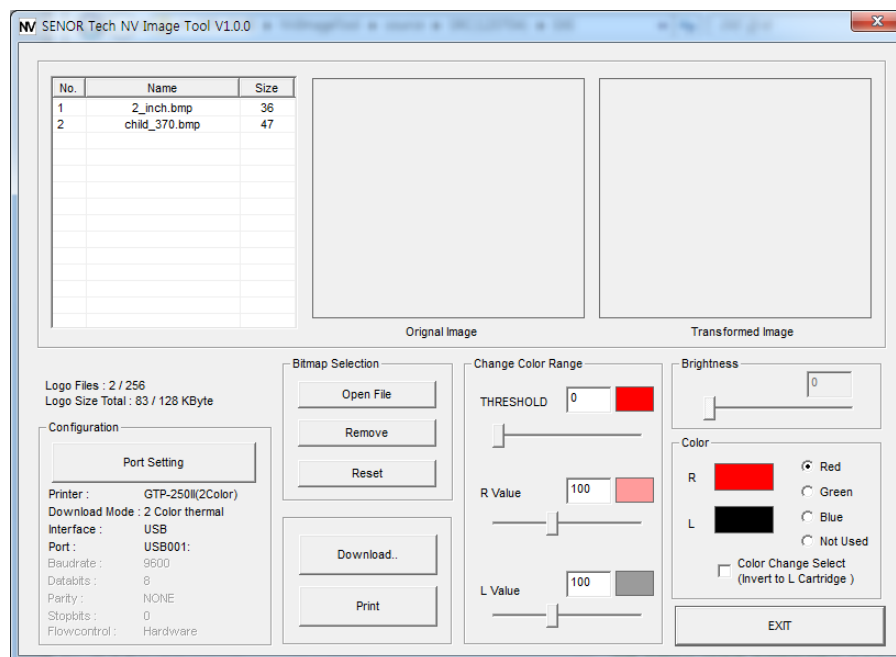
The Name of Execute File is "NVTool.exe".

## 4. Usage of NV Image Tool

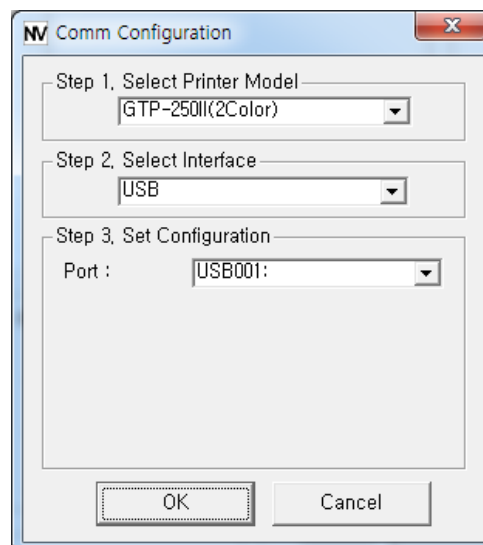
### 4-1 Communication Configuration

To use the NV Image Tool, It is necessary to set the status of communication between Printer and PC.

- 1) Run the “NVTool” file.
- 2) Upon initiation of the program, the following pop-up window will appear.



- 3) Click the Configuration button to set communication configuration.



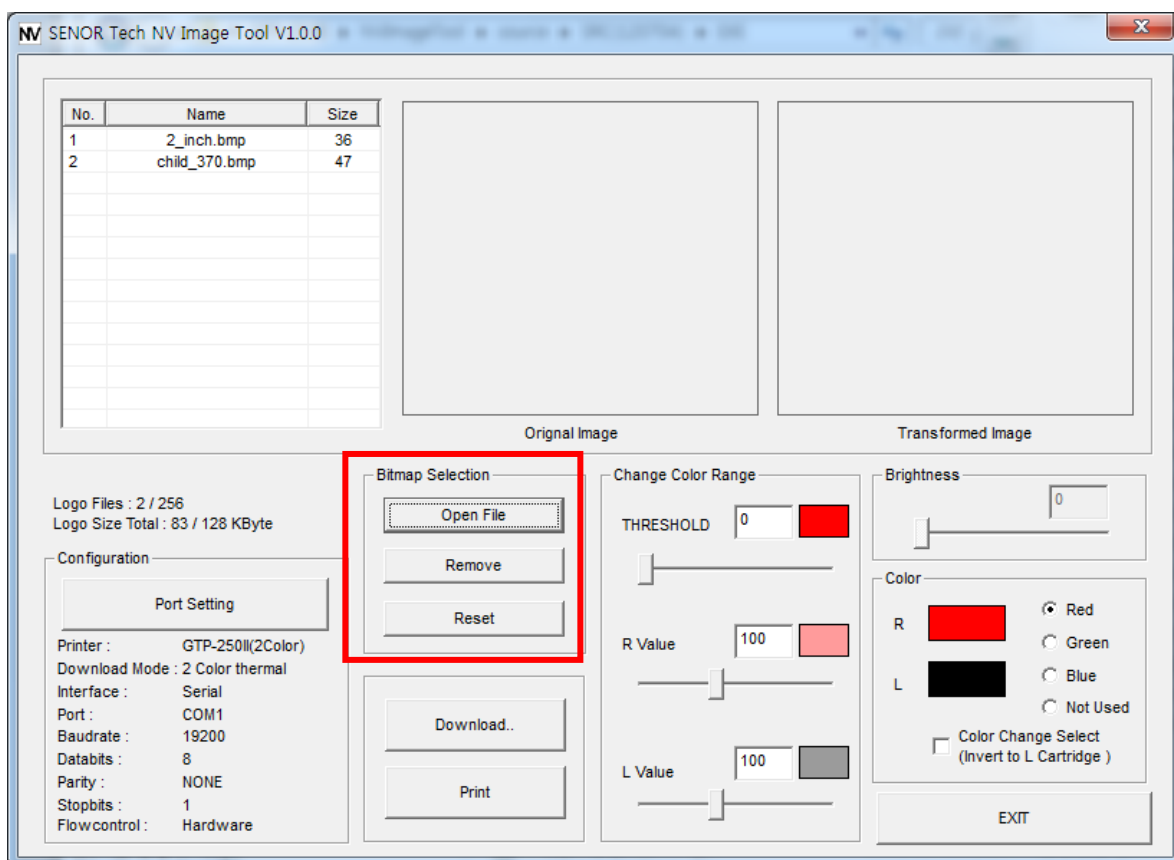
- 4) Each printer model has different communication interface. Set the port and the communication configuration that corresponds to the printer

**\*In the Serial Interface, match the communication setting (COM Port Number and Baud Rate) to those of the Printer.**

- 5) After selecting the configuration press OK to complete the communication configuration setting, and press Cancel to cancel the configuration selected.

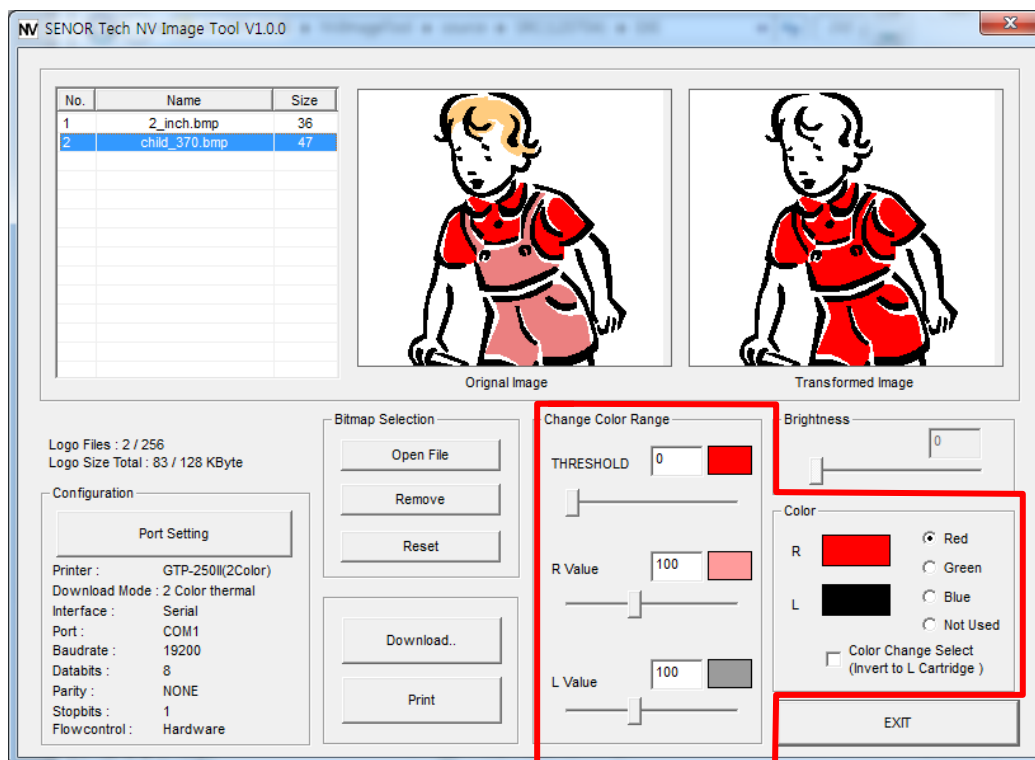
### 4-2 Image List Management

User can open/add, delete and reset images with three buttons in Bitmap selection. Only **bmp** type of image is available to download.



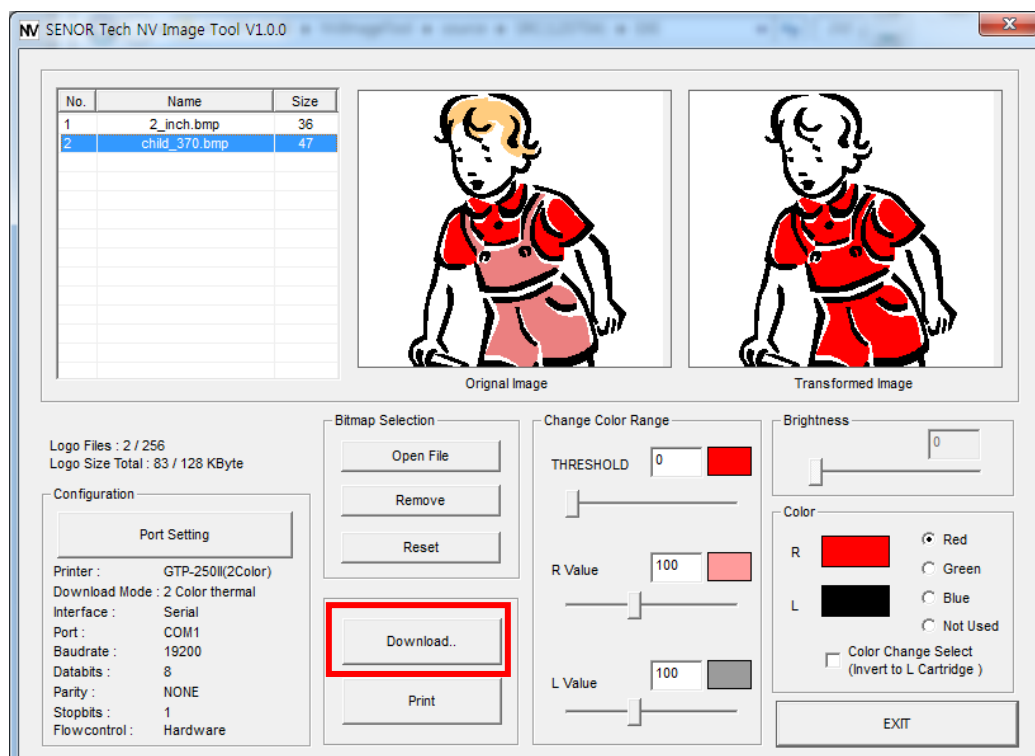
## 4-3 Change Color

User can change the color of image, when you use two color printers. Just try to move the horizontal scroll bar as you can see in the picture.

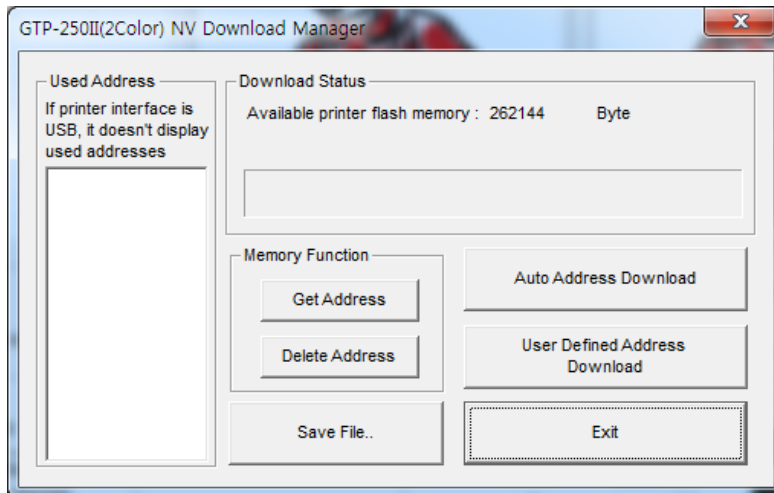


## 4-4 Download the Image

When the "Download.." button is clicked, pop-up window and the steps are different based on printer model.



### 4-4-1 Download the color image in thermal printer

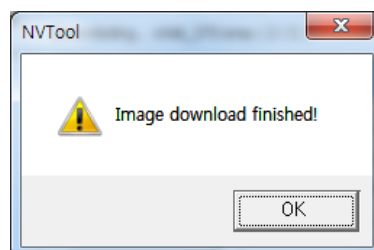


1) Click the “Auto Address Download” button to download the Image to the Printer, and a window appears, which displays the progress of downloading.

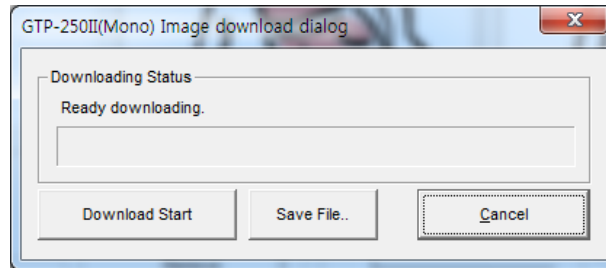
\* All the images in the printer will be erased, and New images in the program will be downloaded.

\* User can save color-converted image to PC using the “Save File..” button.

2) After the font download is complete, the following message will appear.

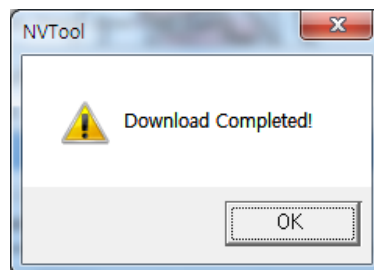


### 4-4-2 Download the mono image in thermal printer



1) Click the “Download Start” button to download the Image to the Printer, and a window appears, which displays the progress of downloading.

2) After the font download is complete, the following message will appear.





## 4-5 Print the NV Image

By Pressing the “Print” button, User can print all the image(s) in flash memory.

